



*Data-Driven Technologies in Directorate
General of Treasury*

The Implementation of Data Science in the Directorate General of Treasury

Directorate General of Treasury
Belgrade, June 2024



Contents

I. FMIS in Indonesia

II. Introduction of TBD

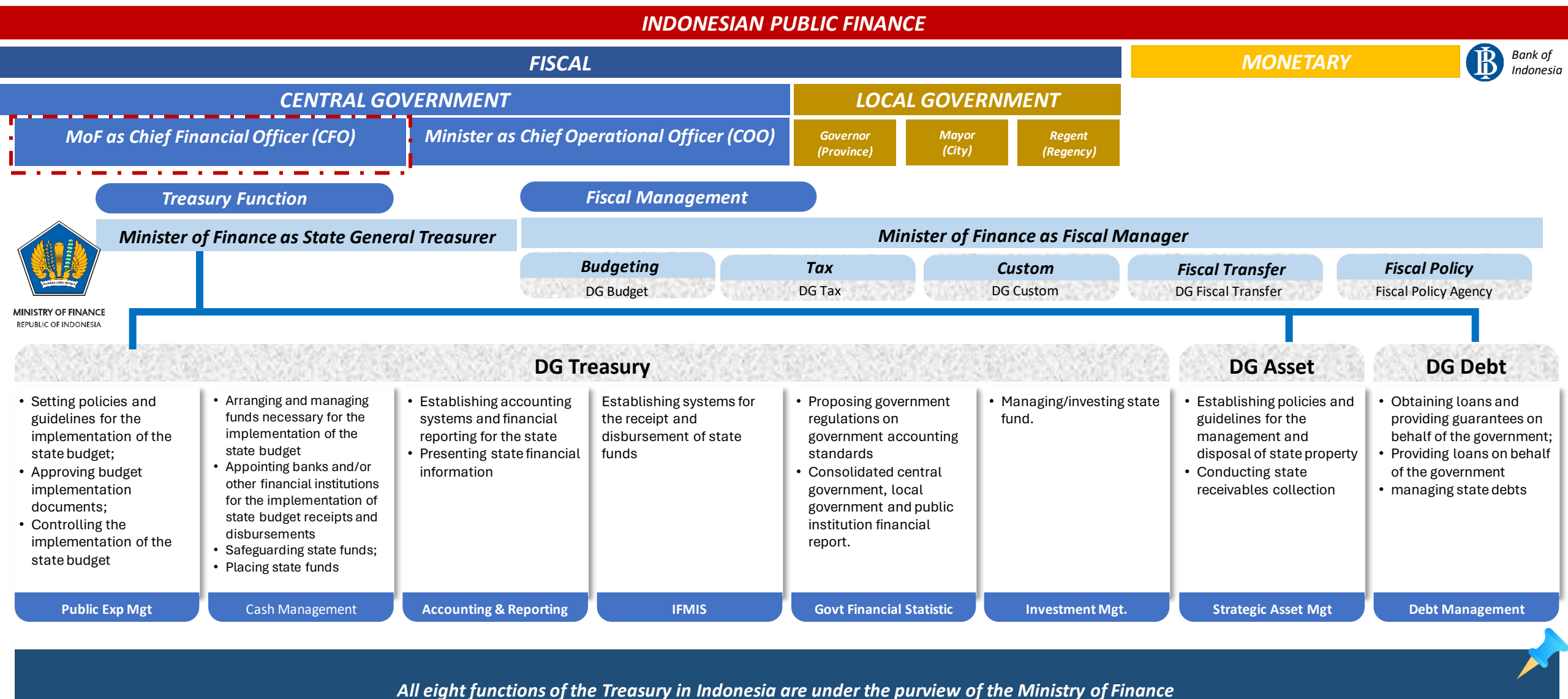
III. Case Development Approach

IV. Projects

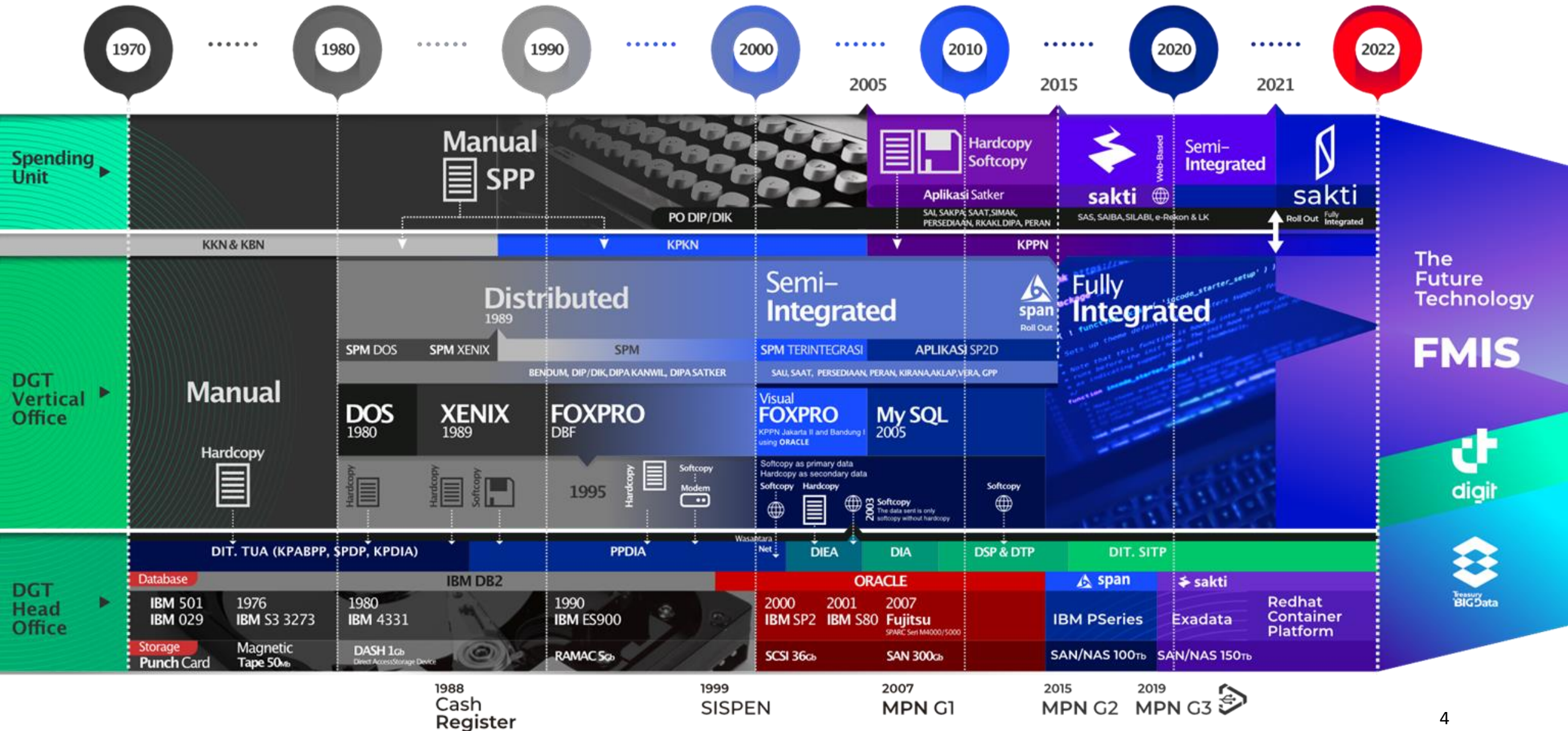
V. Future Works



Current Public Finance and Treasury Function



DG Treasury *IT Evolution*



Two Sides of *Indonesia PFM's* Coin



General State Treasurer
(Treasury Office)



Budget Users
(Spending Units)

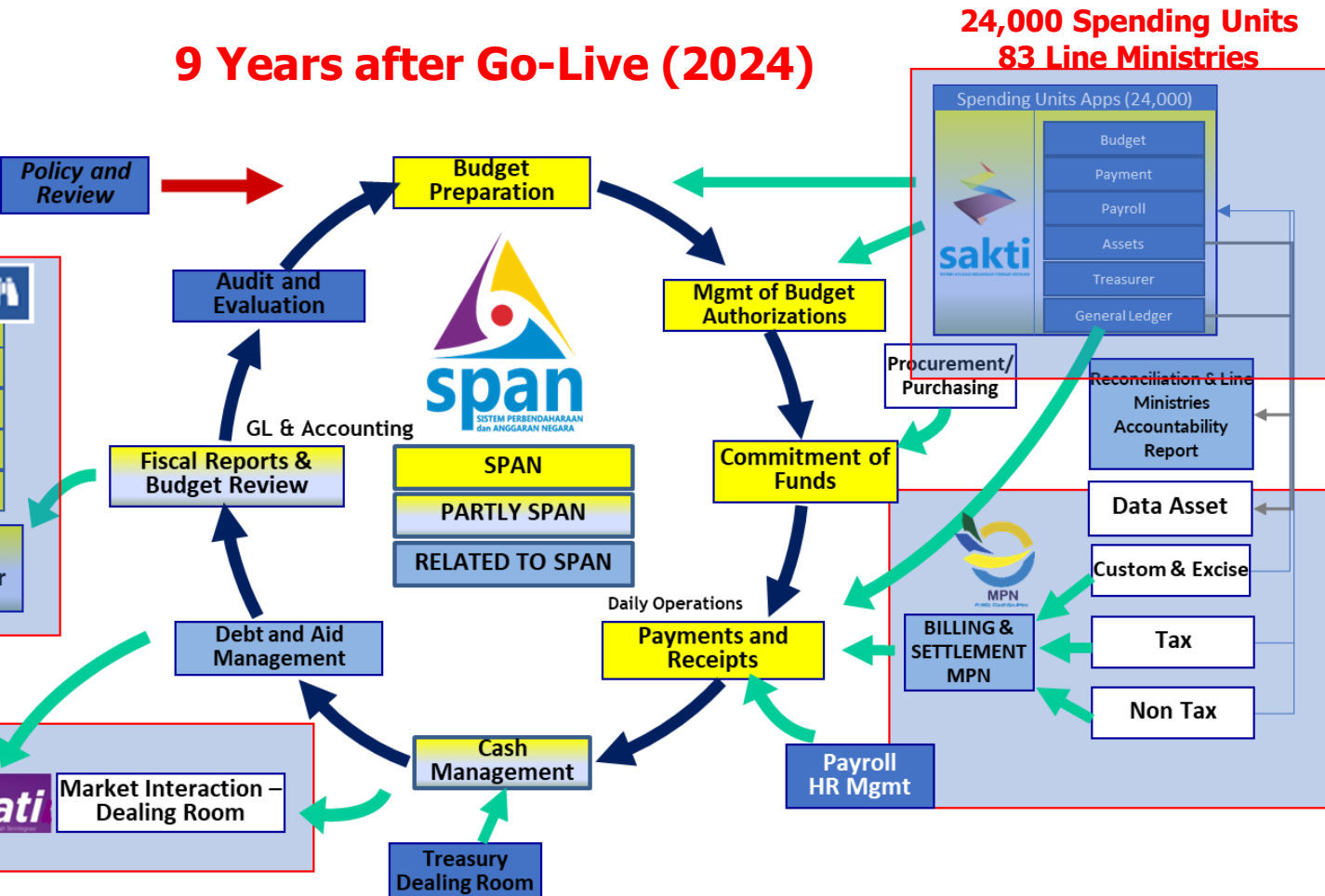


FMIS in Indonesia: SPAN and Surrounding Systems



9 Years after Go-Live (2024)

More than
77,000 users

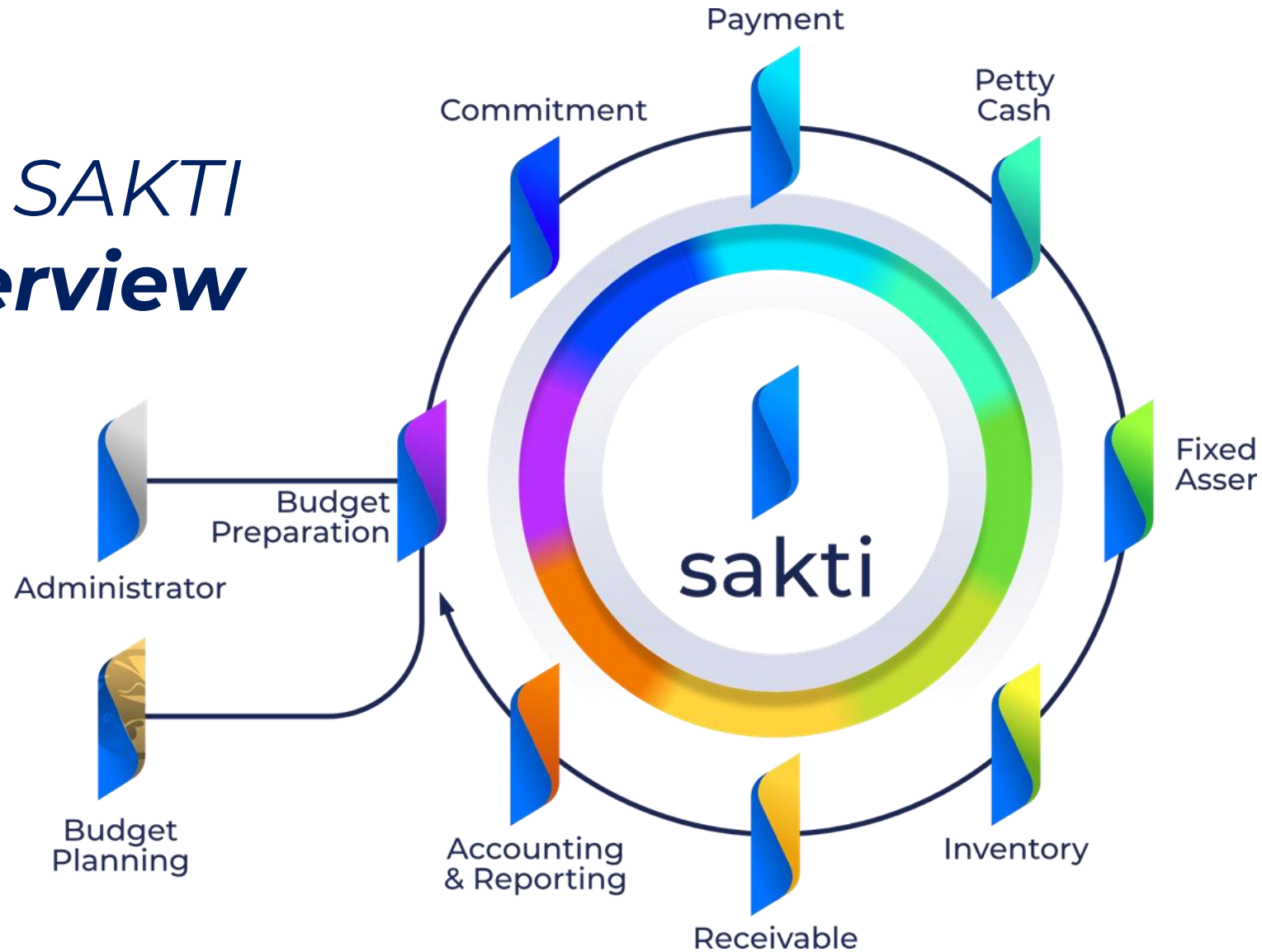


SPAN Core Application

SPAN is a COTS-based software use by MoF for budget and treasury functions
The systems surrounding SPAN Core Application include:

- **SAKTI**, an application developed by MoF being used by LMs and Spending Units to perform financial management (Budgeting, Disbursement as well as Reporting)
- All data entered into SPAN under the criteria of CoA is shared across sub-modules within SPAN as a mean of sequential/partial validation and integration
- Both SPAN and SAKTI use the same CoA and data structure to support interconnection
- **OM SPAN** is a monitoring application accessed by LMs and Spending Units to monitor disbursements and transfer of funds to local governments

SAKTI Overview



INTEGRATED
Process



Horizontal



Vertical

MASSIVE
User

>240k users of >19k
Spending Units across
Indonesia and 130
Countries

MODERN
Technology

- Automated
- Real time
- Online
- Multiplatform
- Interoperable
- Secure



Introduction



Background

Within the context of the Directorate General of Treasury, Data Science and Artificial Intelligence are being leveraged to improve financial management, decision-making, and operational efficiency within the organization.

The implementation of data science using advanced analytics techniques to analyze financial data, identify patterns, forecast trends, optimize processes, and make data-driven decisions.



Structure

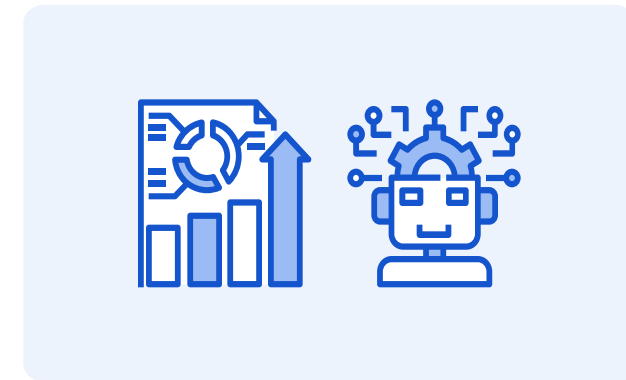


Data Source

INTERNAL	EKSTERNAL
<ul style="list-style-type: none"> • SPAN • SAKTI • DIGIT • Data Survey Region Office/KPPN • Other Internal Data 	<ul style="list-style-type: none"> • Statistical Bureau • Bloomberg Data • Other Source



Data Process



Output





Case Development Approach



Use Case ?

1. Request from business process owners;
2. Benchmarking from other Countries/ Agencies;
3. Obtained from data analytics competitions;
4. Workshop/ Focus Group Discussions.

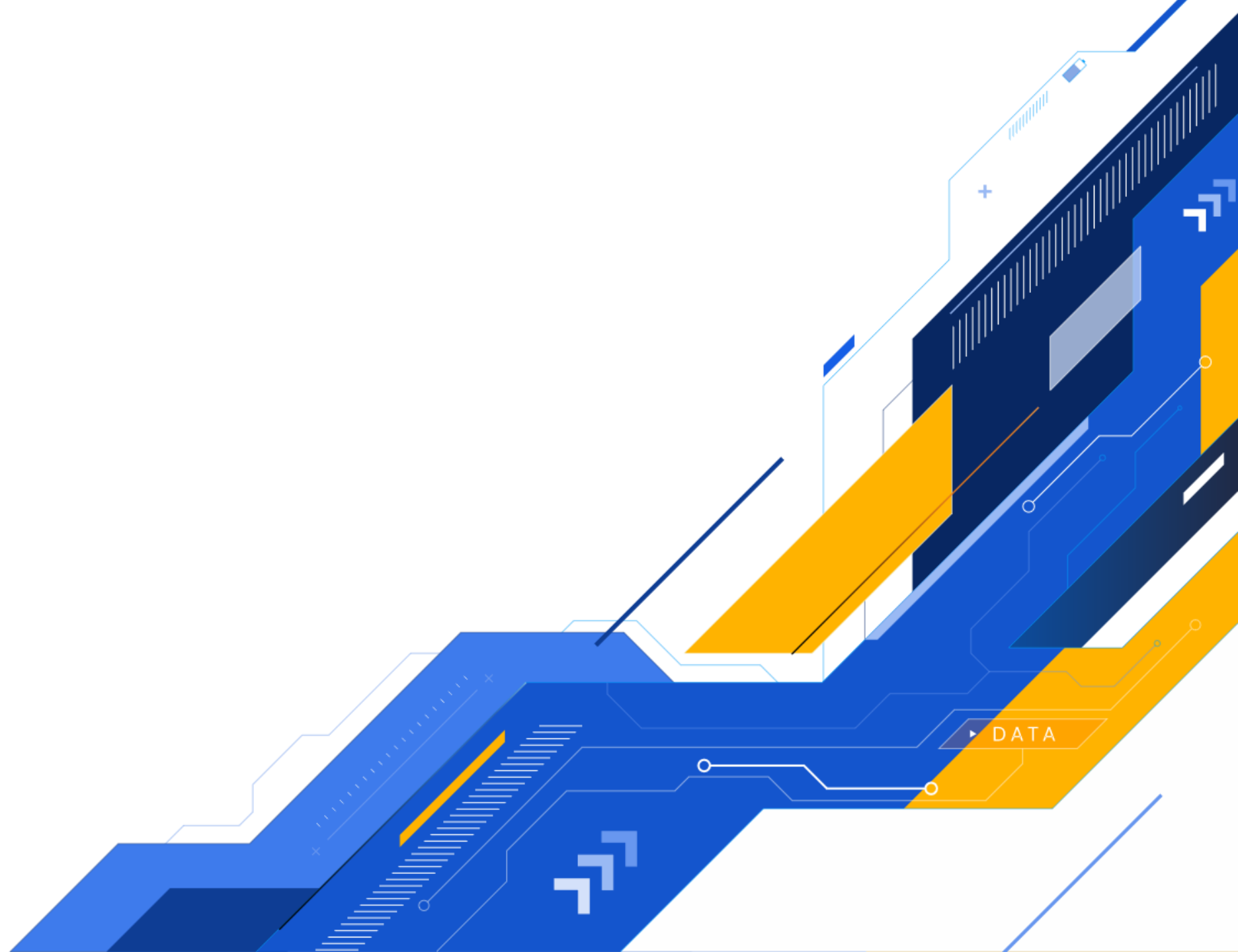


Data Analytics Competitions

This Data Analytics Competition is aimed at adapting the skill sets possessed by the DG of Treasury Regional Office (Kanwil DJPb)/State Treasury Services Office (KPPN) employees to be able to complete several new tasks assigned to them.



Projects



Treasury Big Data (Products)



Open Data

Download | Upload | Request



Dynamic Dashboard

Descriptive, Predictive, and Prescriptive Analytics.



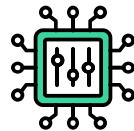
Artificial Intelligence

Natural Language Processing;
Digital Assistance (BOT);
Detection and Recognition.



Data Analytics

Government Expenditure;
Cash Management;
Government Investment.



Machine Learning

Revenue Trajectory;
Optimum Cash Buffer (on progress);
Data Labelling on Payments (on progress).



Open Data

Development Background

1. Data needs by stakeholders (Kanwil DJPb & KPPN)
2. The role of Kanwil DJPb as Regional Chief Economist and Financial Advisor
3. Data is scattered from various sources (OM SPAN, MONSAKTI, BPS, Simtrada/SIKD, SIKRI, BI, Regional Government, SIKP, MPN, etc.)
4. Routine data requirements (weekly/monthly), short data preparation time
5. The need for data access both via the internet and intranet

APIKatalog

Layanan DIGIT

Ali Firdaus Achdard
Pengguna Dataset

Beranda

FORM

Permintaan Data

REFERENSI

Dataset

DOKUMENTASI

FAQ

Referensi Dataset

Tampilkan 10 entri

Cari (tekan enter):

NO	KATEGORI	NAMA DATASET	JML KOLOM	STATUS	AKSI
1	PENGELUARAN	APBD BELANJA 2023	20	Aktif	-
2	PAGU	APBD DIPA 2023	18	Aktif	-
3	PENGELUARAN	APBN BELANJA 2023	15	Aktif	-
4	PAGU	APBN DIPA 2023	16	Aktif	-
5	PENGELUARAN	BANSOS 2022	9	Aktif	-
6	PENGELUARAN	BANSOS 2023	9	Aktif	-
7	BPS	BPS ANGKA HARAPAN HIDUP	5	Aktif	-
8	BPS	BPS EKSPOR IMPOR NASIONAL	9	Aktif	-
9	BPS	BPS GINI RASIO	5	Aktif	-
10	BPS	BPS INDEKS PEMBANGUNAN MANUSIA	5	Aktif	-

Menampilkan 1 sampai 10 dari 44 entri

2023 © Direktorat SITP

Tentang Support



Open Data

Concept

1. Programming interface for data sharing that uses data on Treasury Big Data.
2. Users can choose the required data themselves.
3. The output can be an API link or a CSV/XLS file.
4. Data can be streamed to the system or humans.
5. Can be accessed via the internet or intranet.

Benefit

Supporting data needs quickly and independently for both internal Ministry of Finance (KPPN, Kanwil DJPb, other Directorates, and Echelon 1) and external to the Ministry of Finance.*

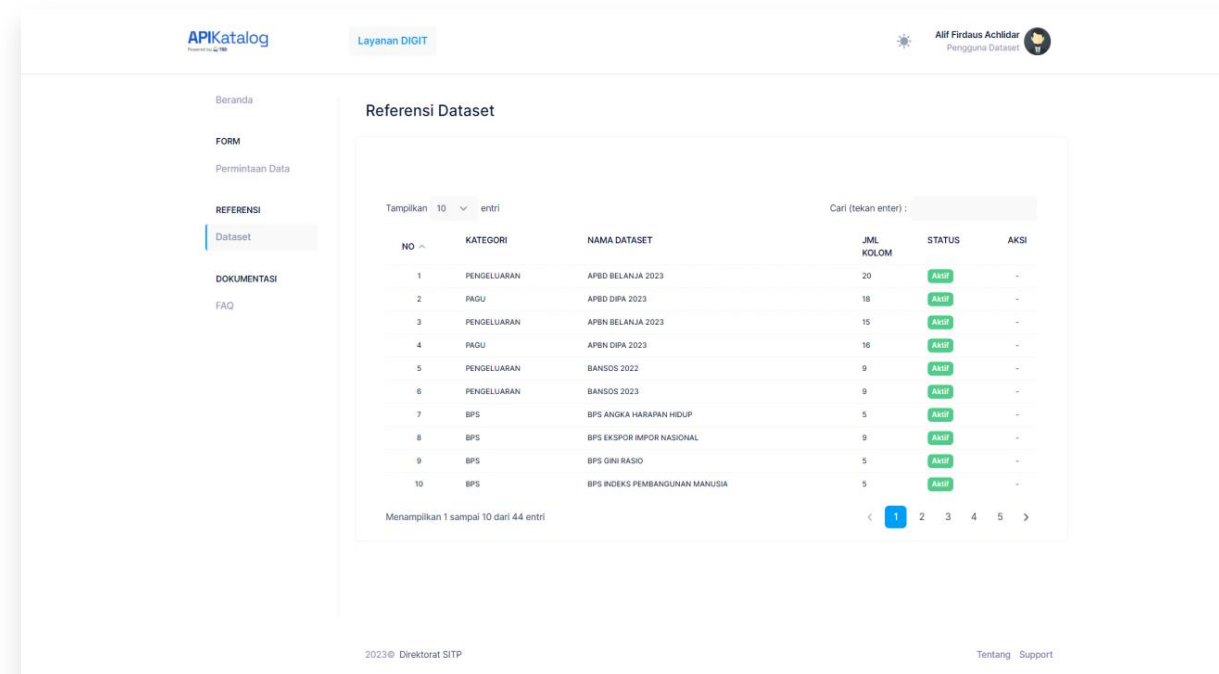
*Adapts to Ministry of Finance regulations

Features

Download Data

Upload Data

Request Data



Artificial Intelligence

Development Background

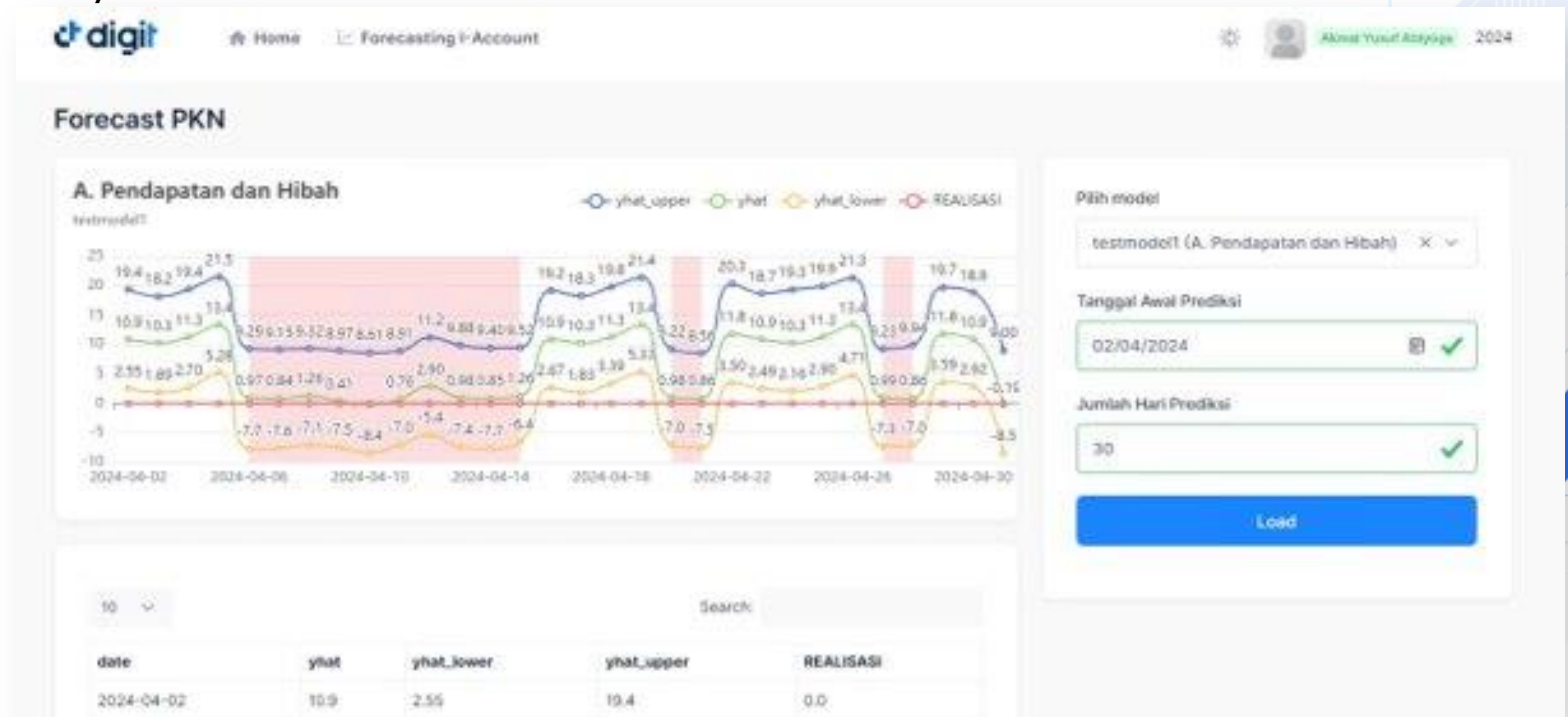
The Ministry of Finance is facing challenges in managing government cash due to the complexity of its duties and the abundance of financial data. With manual analysis becoming more difficult, decision-making is impacted, and it's leading to increased uncertainty and risk. Timely and accurate decisions are vital for financial stability and efficient public services, considering economic changes and political dynamics.

Description

A simulation system that can produce projections of APBN realization based on predetermined scenarios. This includes projections of income, expenditure and other main items in the APBN

Objective

Implementing an IT-based treasury system for APBN simulation, facilitating rapid financial data processing and strategic decision support to maximize government cash management efficiency.



Data Analytics

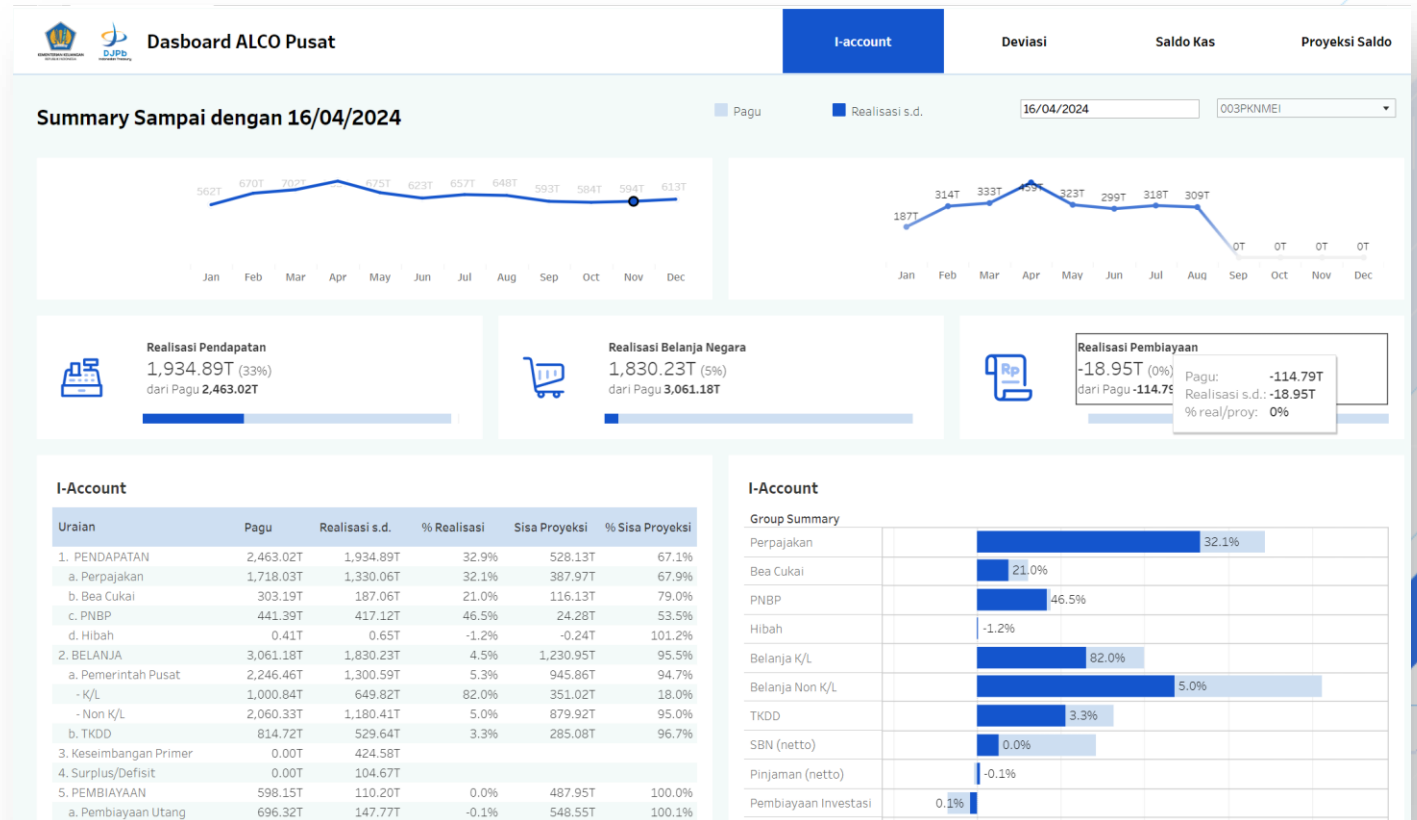
Asset Liability Committee's Dashboard

Development Background

1. Data presentation is still static and does not answer decision-making needs.
2. Preparation of reports to support decision-making is still manual (using Microsoft Excel)
3. There are no projections yet prepared using a Machine Learning (ML) approach

Objective

Providing devices (systems) that provide flexibility in presenting actual and projected data and producing projections using a Machine Learning approach so that they are able to provide input in decision making



Machine Learning

digiti Layanan Treasury Big Data MODUL T10

Form Prediksi Financial Distress

Pilih Kabupaten/Kota

KOTA SURABAYA_1330

Load

1. Pendapatan Pajak Daerah
3.648.730.000.000

2. Pendapatan Retribusi Daerah
235.592.000.000

3. Pendapatan Hasil Pengelolaan Kekayaan Daerah yang Dipisahkan
190.861.000.000

4. Lain-lain Pendapatan Asli Daerah yang Sah
896.587.000.000

5. Dana Bagi Hasil Pajak
539.285.000.000

6. Dana Bagi Hasil Bukan Pajak/SDA
63.749.700.000

7. Dana Alokasi Umum
1.917.960.000.000

8. Dana Alokasi Khusus
394.147.000.000

9. Dana Otonomi Khusus
0

10. Dana Kelistriawan
0

11. Dana Penyesuaian
0

12. Dana Insentif Daerah
48.197.900.000

13. Dana Desa
0

14. Dana Bantuan Operasional Sekolah
0

15. Pendapatan Bagi Hasil Pajak
1.013.860.000.000

16. Pendapatan Bagi Hasil Lainnya
0

17. Pendapatan Dana Otonomi Khusus (Kab/Kota)
0

18. Bantuan Keuangan dari Pemerintah Daerah Provinsi Lainnya
3.255.400.000

19. Bantuan Keuangan dari Pemerintah Daerah Kabupaten
0

20. Bantuan Keuangan dari Pemerintah Daerah Kota Lainnya
0

Financial Distress Pemda

Using machine learning as a risk mitigation effort in predicting debtor (local government) failure to pay. The user selects the name of the Province/City and then adjusts the existing financial components so that the user can predict whether the debt can be paid or not



Early Warning System For State-Owned Enterprise

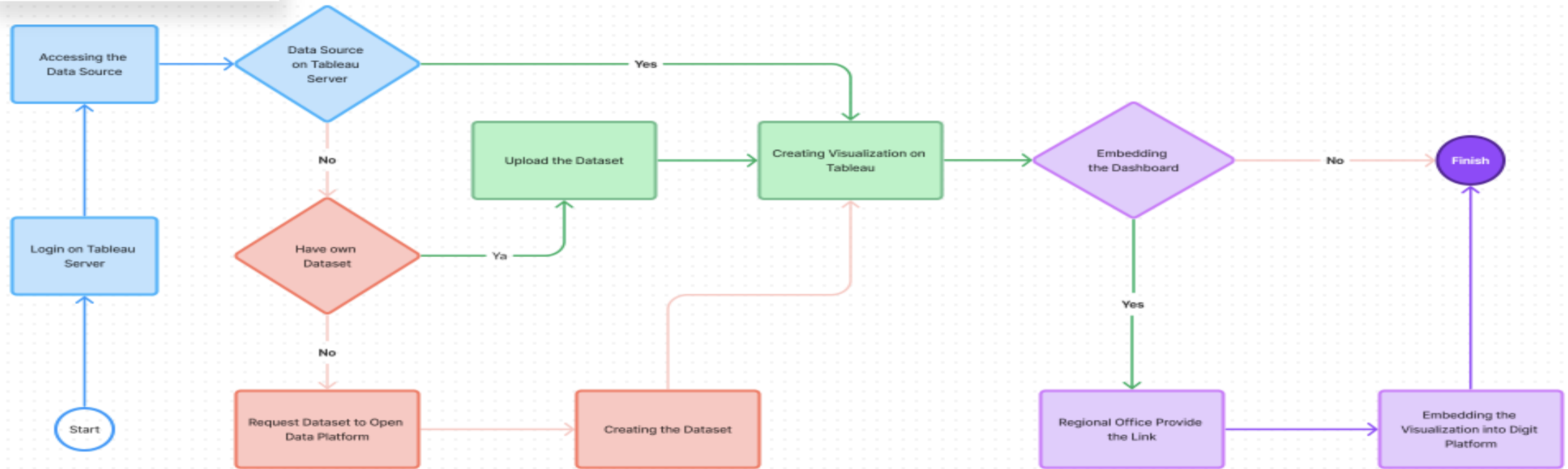
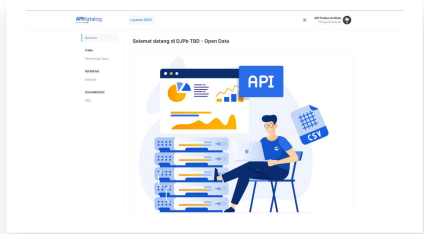
Platform to determine the payment capacity of state-owned enterprises as a step to prevent payment failures of state-owned enterprises.



Future Works



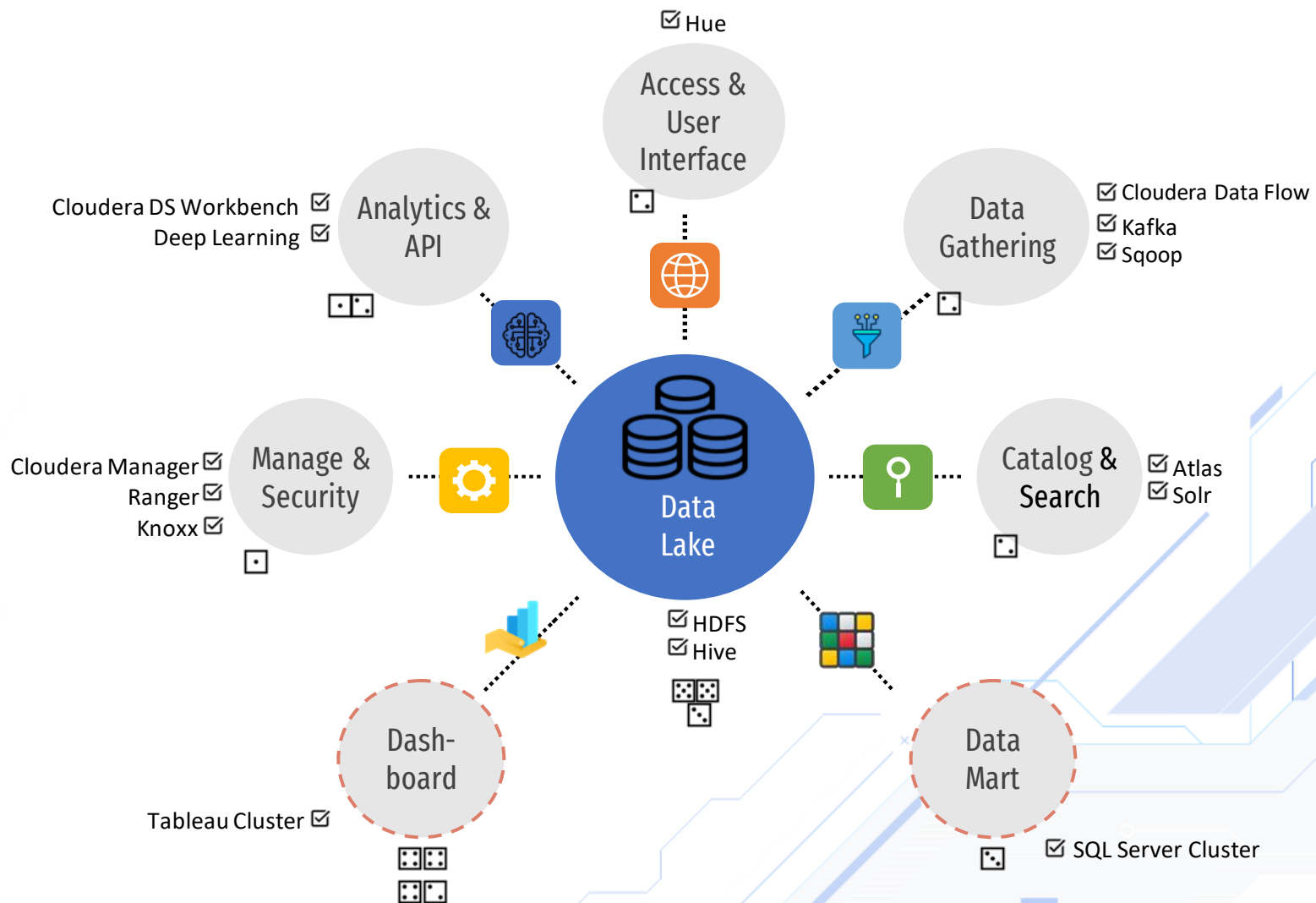
Integrated Platforms



Developing an integrated platform that will be used by the Regional Office of the Directorate General of Treasury (Kanwil DJPb) and the State Treasury Services Office (KPPN).



Enhancing Treasury Big Data Environment for the Next Data Science Projects



THANK YOU

